





# TAIKAN

Introducing TAIKAN COLLECTION 005.

Continuing to embrace the evolution of our worldly market, Taikan pursues its familiarity in creative adaptation.

Merging vibrant palettes, technical fabrics and simplistic silhouettes creates an ideal juxtaposition; allowing Taikan to remain true to its core values of innovative design and attention to detail.

This season Taikan introduces the all new RAVEN and AVIS, along with progressive updates to the famed LANCER and SPARTAN models (2.0). These amendments to Collection 005 continue Taikan's tradition for purpose driven product at an attainable market value.



## SPARTAN 2.0

260-1300



Our SPARTAN 2.0 is a classic backpack silhouette with a twist. This bag includes a wide range of storage solutions, including two exterior pouches, a water-resistant compartment located at the bottom of the bag, and an external 15" laptop sleeve. Additional features include matte-black finish zips & hardware, and premium leather tassels.



Taikan — Collection 005

## HORNET

080-1300



Our HORNET is a minimalistic approach to your everyday pack. With an un-structured silhouette, the HORNET creates the perfect look for work, travel and play. This backpack features an internal laptop compartment for easy CPU access, and an exterior pocket for external storage.







6

7

In Black Herringbone



# AVIS

290-1300



Our AVIS, a hybrid tote/backpack, brings together the best of both worlds. This multi-functional bag includes a wide range of storage solutions, including two exterior zip pouches. Additional features include matte-black zips and hardware, paracord compartment closure, and premium leather tassels.



# RAVEN

210-1300



Our RAVEN is an addition to you everyday needs. This camera bag can be worn over the shoulder, across-chest or around the neck. Although this bag is designed to fit most point and shoots, it can also be used for accessories such as wallets, passports, keys, phones and more. Additional features include an external magnet closure pocket, and matte black zips and hardware.



## FLANKER

090-1300



Our FLANKER is a minimalistic approach to the classic tote. This durable, Matte-Finish, Ballistic Nylon shoulder bag features a drawstring closure, ensuring that nothing goes missing on your daily ventures. Additional features matte black hardware and three internal pockets.

Talkin' — Collection 005

## In Black Herringbone

## SPECTRE

010-1300

Our SPECTRE is a refreshing take on an iconic silhouette. This bag can be worn over the shoulder, across-chest or on the hip. With two external pockets and a main zip compartment, there is ample space to accommodate your daily needs.







## LANCER 2.0

220-6600



Our LANCER 2.0 is an update to the most classic backpack silhouette for a modern lifestyle. This bag features an external 15" laptop compartment for easy CPU access, dual-pocket zips giving multiple solutions for storage, and premium leather tassels.

10

Taikan — Collection 005

11

## In Grey Herringbone



## HORNET

080-3500



Our HORNET is a minimalistic approach to your everyday pack. With an un-structured silhouette, the HORNET creates the perfect look for work, travel and play. This backpack features an internal laptop compartment for easy CPU access, and an exterior pocket for external storage.



## FLANKER

090-6600

Our FLANKER is a minimalistic approach to the classic tote. This shoulder bag features a drawstring closure, ensuring that nothing goes missing on your daily ventures. Additional features matte black hardware and three internal pockets.



Taikan — Collection 005

In Grey Herringbone

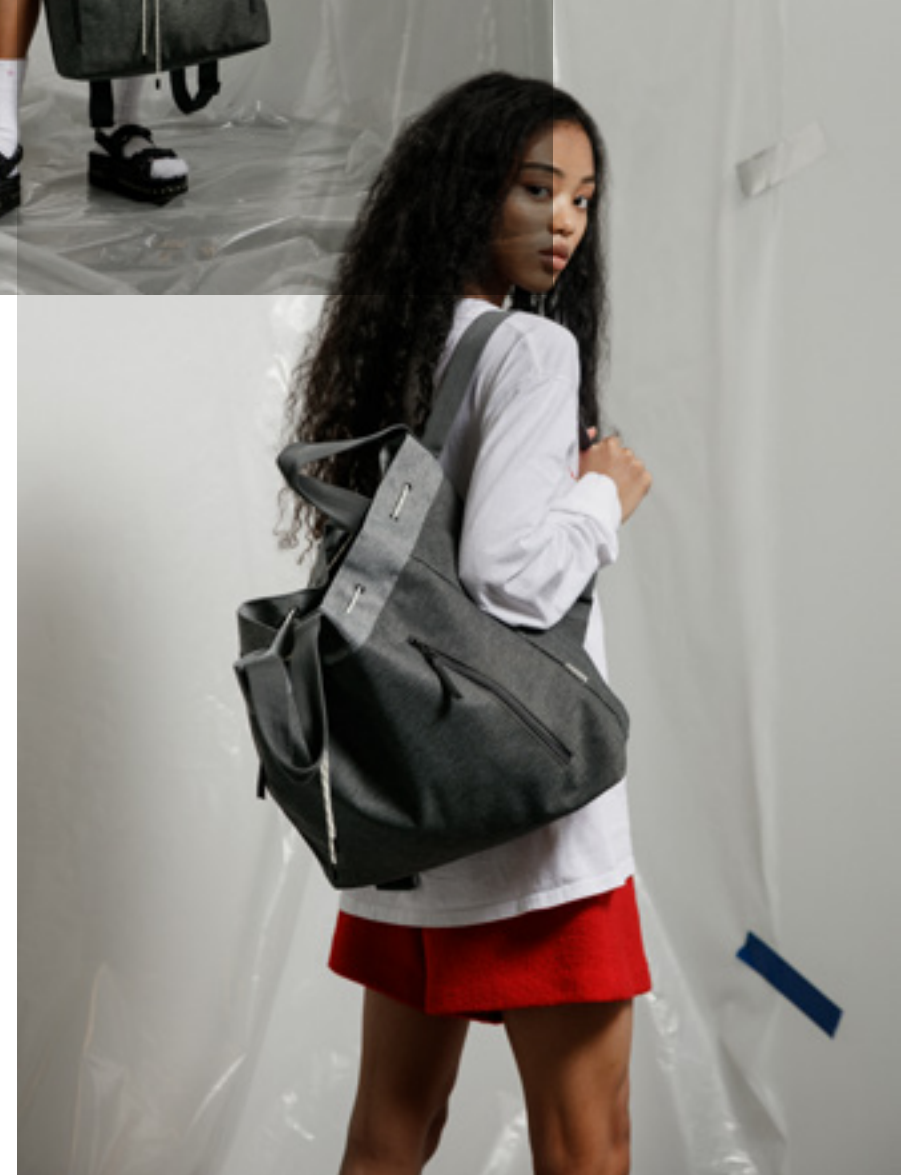


## AVIS

290-6600



Our AVIS, a hybrid tote/backpack, brings together the best of both worlds. This multi-functional bag includes a wide range of storage solutions, including two exterior zip pouches. Additional features include matte-black zips and hardware, paracord compartment closure, and premium leather tassels.





## HORNET

080-2500



Our HORNET is a minimalistic approach to your everyday pack. With an un-structured silhouette, the HORNET creates the perfect look for work, travel and play. This backpack features an internal laptop compartment for easy CPU access, and an exterior pocket for external storage.

Taikan — Collection 005

## In Blue

## FLANKER

090-2500



Our FLANKER is a minimalistic approach to the classic tote. This shoulder bag features a drawstring closure, ensuring that nothing goes missing on your daily ventures. Additional features matte black hardware and three internal pockets.







**SHERPA**  
030-2500

Our SHERPA is the ultimate tote. The bag is ideal for all of your needs. The key feature is an external seam, creating four exterior pockets to provide easily accessible storage solutions. Internally, the classic tote silhouette is updated to accommodate all of your portable technology, including a padded 15" laptop sleeve. Additional features matte black hardware and feet and premium leather handles.



Taikan — Collection 005



**RAVEN**  
210-2500

Our RAVEN is an addition to you everyday needs. This camera bag can be worn over the shoulder, across-chest or around the neck. Although this bag is designed to fit most point and shoots, it can also be used for accessories such as wallets, passports, keys, phones and more. Additional features include an external magnet closure pocket, and matte black zips and hardware.

## SPECTRE

010-8000

Our SPECTRE is a refreshing take on an iconic silhouette. This bag can be worn over the shoulder, across-chest or on the hip. With two external pockets and a main zip compartment, there is ample space to accommodate your daily needs.

Taikan — Collection 005

In Orange



## FLANKER

090-2500

Our FLANKER is a minimalistic approach to the classic tote. This shoulder bag features a drawstring closure, ensuring that nothing goes missing on your daily ventures. Additional features include nickel finish hardware and two internal pockets for multiple storage solutions.





## HORNET

080-8000



Our HORNET is a minimalistic approach to your everyday pack. With an un-structured silhouette, the HORNET creates the perfect look for work, travel and play. This backpack features an internal laptop compartment for easy CPU access, and an exterior pocket for external storage.

Taikan — Collection 005



## RAVEN

210-8000

Our RAVEN is an addition to you everyday needs. This camera bag can be worn over the shoulder, across-chest or around the neck. Although this bag is designed to fit most point and shoots, it can also be used for accessories such as wallets, passports, keys, phones and more. Additional features include an external magnet closure pocket, and matte black zips and hardware.



**SPARTAN 2.0**

260-3500



Our SPARTAN 2.0 is a classic backpack silhouette with a twist. This bag includes a wide range of storage solutions, including two exterior pouches, a water-resistant compartment located at the bottom of the bag, and an external 15" laptop sleeve. Additional features include matte-black finish zips & hardware, and premium leather tassels.

Taikan — Collection 005

**SHERPA**

030-3500



Our SHERPA is the ultimate tote. The bag is ideal for all of your needs. The key feature is an external seam, creating four exterior pockets to provide easily accessible storage solutions. Internally, the classic tote silhouette is updated to accommodate all of your portable technology, including a padded 15" laptop sleeve. Additional features matte black hardware and feet and premium leather handles.





**HORNET**  
080-3500

Our HORNET is a minimalistic approach to your everyday pack. With an un-structured silhouette, the HORNET creates the perfect look for work, travel and play. This backpack features an internal laptop compartment for easy CPU access, and an exterior pocket for external storage.



24



25

In Olive



Taikan — Collection 005

**FLANKER**  
030-3500



Our FLANKER is a minimalistic approach to the classic tote. This shoulder bag features a drawstring closure, ensuring that nothing goes missing on your daily ventures. Additional features include matte black hardware and three internal pockets.



## LANCER 2.0

220-6500

Our LANCER 2.0 is an update to the most classic backpack silhouette for a modern lifestyle. This bag features an external 15" laptop compartment for easy CPU access, dual-pocket zips giving multiple solutions for storage, and premium leather tassels.



Taikan — Collection 005



## HORNET

080-6500

Our HORNET is a minimalistic approach to your everyday pack. With an un-structured silhouette, the HORNET creates the perfect look for work, travel and play. This backpack features an internal laptop compartment for easy CPU access, and an exterior pocket for external storage.







# FLANKER

090-6500



Our FLANKER is a minimalistic approach to the classic tote. This shoulder bag features a drawstring closure, ensuring that nothing goes missing on your daily ventures. Additional features include matte black hardware and three internal pockets.

Taikan — Collection 005



28

29

In Sepia



# SPECTRE

010-6500

Our SPECTRE is a refreshing take on an iconic silhouette. This bag can be worn over the shoulder, across-chest or on the hip. With two external pockets and a main zip compartment, there is ample space to accommodate your daily needs.



30

## HORNET

080-1100



Our HORNET is a minimalistic approach to your everyday pack. With an un-structured silhouette, the HORNET creates the perfect look for work, travel and play. This backpack features an internal laptop compartment for easy CPU access, and an exterior pocket for external storage.

31



In Black Ballistic

## FLANKER

090-1100



Our FLANKER is a minimalistic approach to the classic tote. This durable, Matte-Finish, Ballistic Nylon shoulder bag features a drawstring closure, ensuring that nothing goes missing on your daily ventures. Additional features include nickel finish hardware and two internal pockets for multiple storage solutions.





In Black Ballistic

SHERPA

030-1100

Our SHERPA is the ultimate tote. The bag is ideal for all of your needs. The key feature is an external seam, creating four exterior pockets to provide easily accessible storage solutions. Internally, the classic tote silhouette is updated to accommodate all of your portable technology, including a padded 15” laptop sleeve. Additional features matte black hardware and feet and premium leather handles.



Taikan — Collection 005

In Tobacco Suede



PROWLER

150-2000

Our PROWLER is the perfect composition of simplicity and practicality. This Premium Italian Suede Duffle is ideal for all of your work, travel or play needs. Key features include an external seam which creates four exterior pockets providing easily accessible storage solutions. Additionally the bag includes internal YKK zip pockets, compartments providing multiple storage solutions, and Nickel Finish feet located at the bottom of the bag.



**SHERPA**  
130-3000



Our SHERPA is the ultimate tote. The Premium Italian Suede and Leather bag is ideal for all of your needs. Key features include an external seam, creating four exterior pocket to provide easily accessible storage solutions. Internally, the classic tote silhouette is updated to accommodate all of your portable technology, including a padded 15" laptop sleeve. Also included for extra protection are nickel finish metal feet located at the bottom the bag.

In Black Suede



**SPARTAN**  
160-3000

Our SPARTAN is a classic backpack silhouette with a twist. This Premium Italian Suede bag includes a wide range of storage solutions, including two exterior pouches, a water-resistant compartment located at the bottom of the bag, and an external 15" laptop sleeve. Additional features include a full leather back, and nickel finish YKK zips and hardware.







## HORNET

080-xxxx

H 15in  
W 11.5in  
D 6in

Ballistic Nylon Construction  
Ripstop & Matte Nylon Construction  
Herringbone Polyester Outer  
Ideal Un-Structured Silhouette  
Premium Leather Tassels  
Mil-Spec Webbing  
Internal 15" Laptop Compartment  
Matte Black Zippers & Hardware



MATTE BLACK / 080-1100



OLIVE GREEN / 080-3500



ORANGE / 080-8000



BLUE / 080-2500



SEPIA / 080-6500



GREY HERRINGBONE / 080-6600



BLACK HERRINGBONE / 080-1300

## FLANKER

090-xxxx

H 13.5in  
W 17.5in  
D 4.5in

Ballistic Nylon Construction  
Ripstop & Matte Nylon Construction  
Herringbone Polyester Outer  
Paracord Main Compartment Closure  
Mil-Spec Webbing  
Internal Multi Storage Solutions  
Matte Black Hardware



MATTE BLACK / 090-1100



SEPIA / 090-6500



BLUE / 090-2500



ORANGE / 090-2500



OLIVE / 090-3500



GREY HERRINGBONE / 090-6600



BLACK HERRINGBONE / 090-1300



## AVIS

290-xxxx

H 15in  
W 13.75in  
D 5.25in

Ripstop & Matte Nylon Construction  
Herringbone Polyester Outer  
Paracord Main Compartment Closure  
Premium Leather Tassels  
Mil-Spec Webbing  
2 External Zipped Pockets  
Internal Multi Storage Solutions  
Matte Black Zippers & Hardware



BLACK HERRINGBONE / 290-1300



GREY HERRINGBONE / 290-6600

## SHERPA

030-xxxx / 130-xxxx

H 15in  
W 15in  
D 6.5in

Ballistic Nylon Construction  
Ripstop & Matte Nylon Construction  
Italian Suede Construction  
Matte Nylon OX Lining  
Premium Leather Handles  
Mil-Spec Webbing  
Internal Laptop Sleeve  
2 Front & Back Slip Pockets  
2 Magnetic Side Pockets  
Matte Black Hardware & Feet



MATTE BLACK / 030-1100



OLIVE / 030-3500



ROYAL / 030-2500



BLACK SUEDE / 130-3000

## LANCER 2.0

220-xxxx

H 17in  
W 12.5in  
D 7in

Durable Nylon Construction  
Herringbone Polyester Outer  
Matte Nylon OX Lining  
Premium Leather Tassels  
Mil-Spec Webbing  
Multi Storage Solutions  
External 15" Laptop Compartment  
Matte Black Zippers & Hardware



GREY HERRINGBONE / 220-6600



SEPIA / 220-6500

## LANCER

020-xxxx

H 18in  
W 13.5in  
D 6.5in

Ballistic Nylon Construction  
Durable Nylon Construction  
Matte Nylon OX Lining  
Premium Leather Tassels  
Mil-Spec Webbing  
Multi Storage Solutions  
External 15" Laptop Compartment  
Nickel Finish Zippers & Hardware



MATTE BLACK / 020-1100



## SPECTRE

010-xxxx

H 6.25in  
W 10.75in  
D 3in

Ballistic Nylon Construction  
Ripstop & Matte Nylon Construction  
Herringbone Polyester Outer  
Matte Nylon OX Lining  
Premium Leather Tassels  
Mil-Spec Webbing  
3 Zipped Compartments  
2 Magnetic Front Pockets  
Matte Black Zippers & Hardware



MATTE BLACK / 090-1100



SEPIA / 010-6500

ORANGE / 010-8000

BLACK HERRINGBONE / 010-1300

## RAVEN

210-xxxx

H 7in  
W 4.5in  
D 1.5in

Ripstop & Matte Nylon Construction  
Herringbone Polyester Outer  
Matte Nylon OX Lining  
Premium Leather Tassels  
Mil-Spec Webbing  
2 Zipped Compartments  
Magnetic Front Pocket  
Matte Black Zippers & Hardware



BLACK HERRINGBONE / 210-1300



ORANGE / 210-8000

BLUE / 210-2500

## SPARTAN 2.0

260-xxxx

H 16.5in  
W 12.5in  
D 6.5in

Ripstop & Matte Nylon Construction  
Herringbone Polyester Outer  
Matte Nylon OX Lining  
Mil-Spec Webbing  
Premium Leather Tassels  
Water-Resistant Separate Bottom Compartment  
Dual Exterior Pockets  
Exterior 15" Laptop Sleeve  
Matte Black Zippers & Hardware



BLACK HERRINGBONE / 260-1300



OLIVE / 260-3500

## SPARTAN

160-xxxx / 060-xxxx

H 18in  
W 13.5in  
D 6.5in

Ballistic Nylon Construction  
Italian Suede Construction  
Matte Nylon OX Lining  
Mil-Spec Webbing  
Premium Leather Tassels  
Water-Resistant Separate Bottom Compartment  
Dual Exterior Pockets  
Exterior 15" Laptop Sleeve  
Nickel Finish Zippers & Hardware



SUEDE BLACK / 160-3000



MATTE BLACK / 060-1100

## TOMCAT

040-xxxx

H 16in

W 11in

D 6.25in

Ballistic Nylon Construction  
Nylon OX Lining  
Premium Leather Tassels  
2 Zipped Pockets  
3 Open Pockets  
Interior 15" Laptop Compartment  
Nickel Finish Zippers & Hardware



MATTE BLACK / 040-1100

## PROWLER

150-xxxx

H 11.5in

W 19.5in

D 8.5in

Italian Suede Construction  
Italian Leather Straps Handles  
Veg Tan Luggage Tag  
Cotton Twill Lining  
2 External Open Pockets  
3 Internal Magnetic Closure Pockets  
1 Internal Zipped Pocket  
Nickel Finish YKK Zippers & Hardware  
Removable and Adjustable Leather &  
Nylon Shoulder Strap



TOBACCO SUEDE / 150-2000





